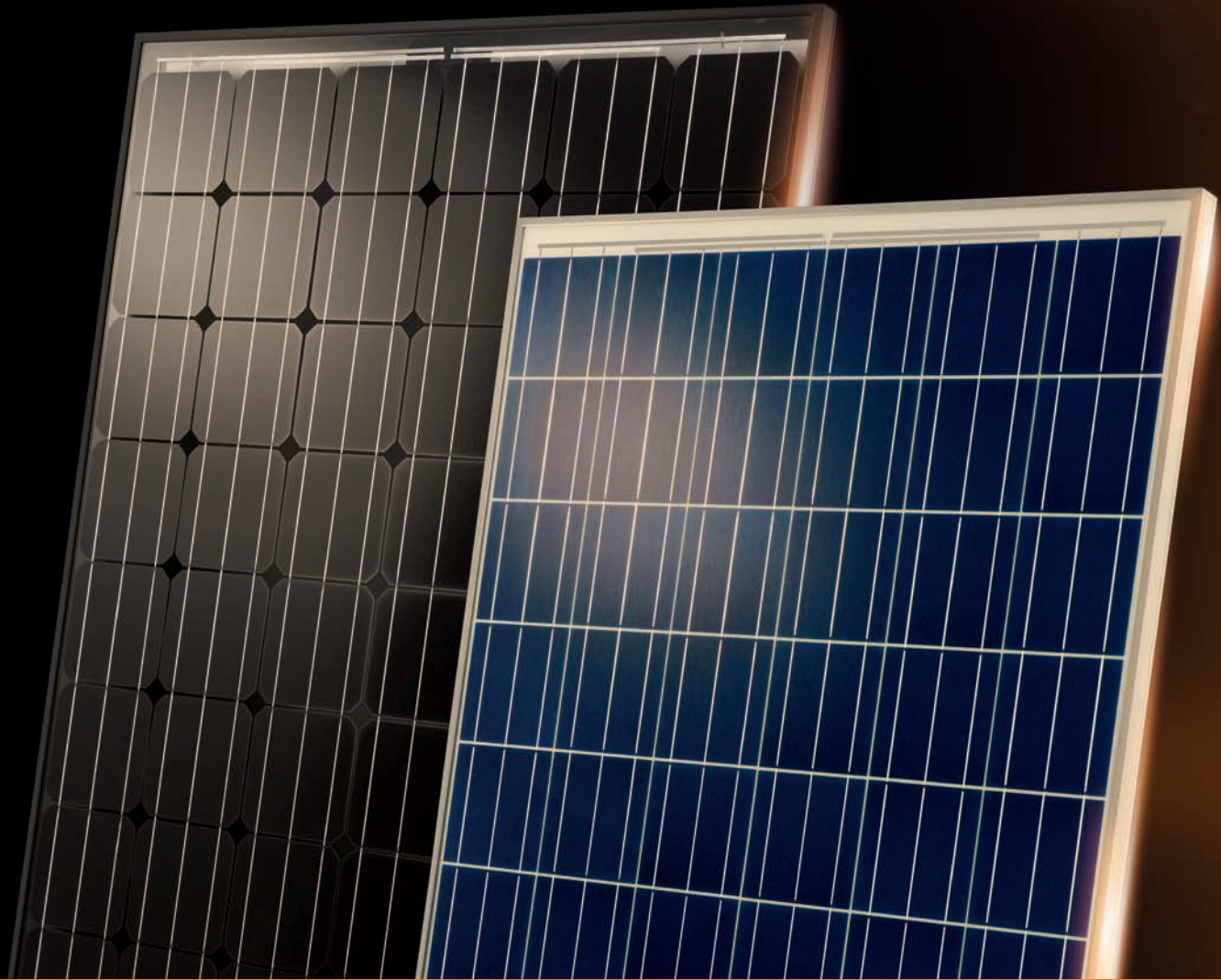


THE MULTI-GENERATION MODULES.



Glass-Glass-Modules. THE SMART INVESTMENT FOR AESTHETES.

 **SOLARWATT**[®]
power to the people

 **Hi-Tech SoLutions Ltd**
www.gshitech.com

GLASS-GLASS MODULES: INDESTRUCTIBLE, EVERLASTING, ECONOMICALLY ATTRACTIVE.

SOLARWATT philosophy:

We believe that glass-glass-modules are the future. Already in 1998 we brought the first glass-glass-module to the market and meanwhile converted our module production completely to glass-glass.

Since 2016 we offer the first and only 300 Wattpeak glass-glass-module worldwide.

Why should you choose glass-glass-modules?

They are the most modern photovoltaic panels the market has to offer. The modules are characterized by:

- Highest quality
- Top resistance
- Exceptionally reliable yield rates
- Extreme durability
- Optimal cell protection



SOLARWATT 60 P the reliable glass-glass-module at a great price?

The module series 60 P offers maximum stability and security. The thin glass (only 2 millimeters) reduced the weight to a minimum. Through the use of polycrystalline solar cells the modules offer highest yield reliability. Secured by 30 years product and performance guarantee and the SOLARWATT KomplettSchutz, a full coverage for your glass-glass-modules.

SOLARWATT 60 M For high demands at a solid price

The glass-glass-modules in the 60 M series are exclusively constructed with mono-crystalline high-performance solar cells for the highest yields and exceptionally reliable yield rates. The use of mono-crystalline cells provides an extremely high-quality look that ensures your photovoltaic system is an eye-catcher. As a result of using 2 mm hardened thin glass, the modules are particularly stable, long-lasting and resistant to extreme weather situations such as heavy hail or sandstorms. Of course, you also get a 30 years product and service warranty and the SOLARWATT full coverage for 5 years for free.

**The modules are particularly light,
strong and last almost forever.**

**Because we know that you get a
SOLARWATT 30 year warranty on it.**

SOLARWATT glass-glass-module style Highly attractive -optical eye-catcher with highest yields

The module series style combines the outstanding product properties of the SOLARWATT glass-glass generation with attractive design elements. The 60 M Style and 60 P Style glass-glass-modules each feature a black frame - the ideal complement to the color of the modules. Your photovoltaic installation becomes a visual highlight. The modules meet the highest quality standards and are characterized by extreme durability, highest yields and extraordinary performance reliability. They are extremely durable and safe from environmental influences.

Optimal cell protection reliably prevents the emergence of snail tracks and discoloration - your modules will look great even after 30 years.

High power glass-glass-modules from SOLARWATT top models with the best performance

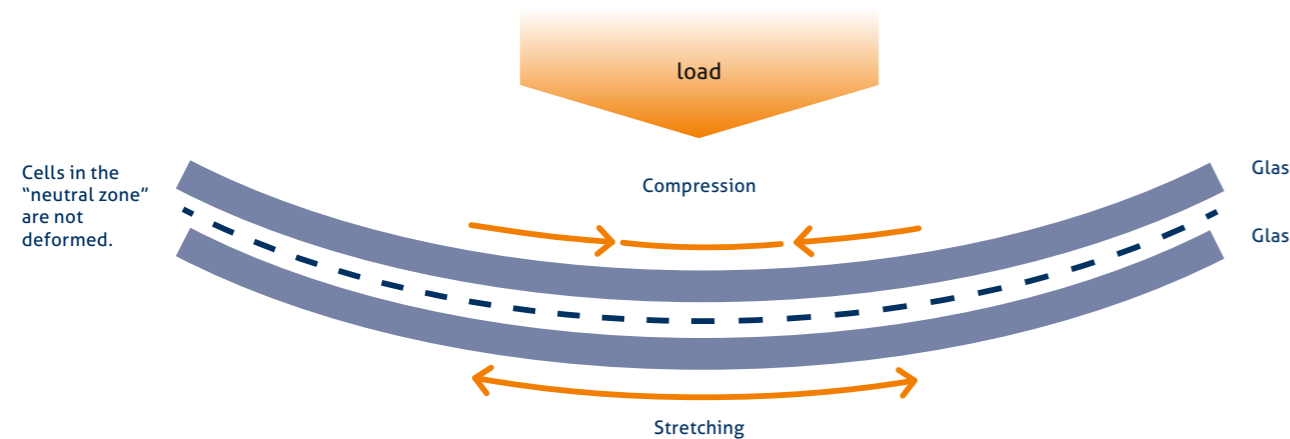
The high quality requirements for the SOLARWATT glass-glass-modules culminate in the high power modules - with a peak power of more than 300 Wp. The modules deliver maximum yield with exceptionally reliable yield rates - an investment for the future. Thanks to the double glass layer the glass-glass-modules offer excellent conditions for the use of state-of-the-art, but very sensitive PERC cells.

GLASS-GLASS TECHNOLOGY. THE MULTI-GENERATION MODULES.

The central advantage glass-glass-modules provide comes from the material itself: glass does not age, so glass-glass-modules can easily last for several generations. The outer glass layers reliably prevent moisture and oxygen from penetrating the module surface. The cells are also protected against salt mist, ammonia and sand storms.

In SOLARWATT glass-glass-modules the use of glass on the top and bottom guarantees optimum cell protection, preventing cell breakage and hotspots. Glass gives the modules exceptional resistance against even extreme environmental conditions.

By the way: so far, SOLARWATT's glass-glass-modules are the only ones that have successfully passed the large-hail test with 45 mm hail grains based on IEC61215.



BRILLIANT. THREE TIMES MORE ECONOMICAL.

SOLARWATT deliberately uses thinner glass on the front sides of its glass-glass-modules, which allows more light to penetrate them. How does that benefit you? Higher yields. A further advantage of thinner front glass is improved cooling. Solar cells supply more energy at lower temperatures, so this effect pays off in the form of higher yields as well. And last but not least, the anti-reflective glass SOLARWATT uses ensures that more light hits the cell - boosting your yields even more.

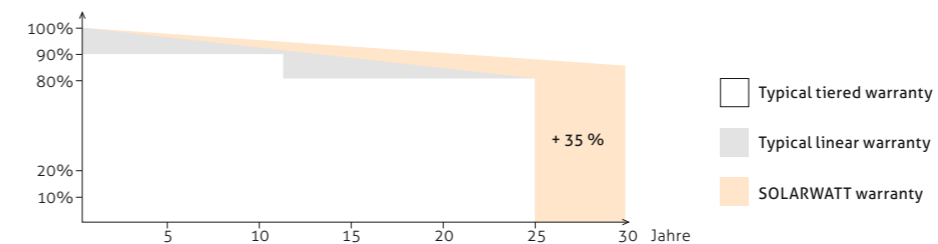
ENERGY FOR THE FUTURE? GUARANTEED.

All-round protection with SOLARWATT warranties

SOLARWATT's glass-glass-modules are an investment in the future – for yourself and for generations to come. Our modules come with 30years of product and service warranty. So you are insured against performance loss and product defects affecting system functionality.

In addition to the warranties, you also receive SOLARWATT KomplettSchutz* free of charge for five years.

The performance warranty on SOLARWATT's glass-glass-modules guarantees you 35% more performance than the market average over the entire warranty period - your benefit from the very best.



SOLARWATT KomplettSchutz*

This free-of-charge insurance protects you against:

- Theft
- Weather damage
- Production stoppage
- Yield losses

Our insurance partner is Ergo insurance group - the German market leader for insurance, preventative measures and other services.

* Available in EU & Norway.

* there are some limitations, please check with your sales partner.





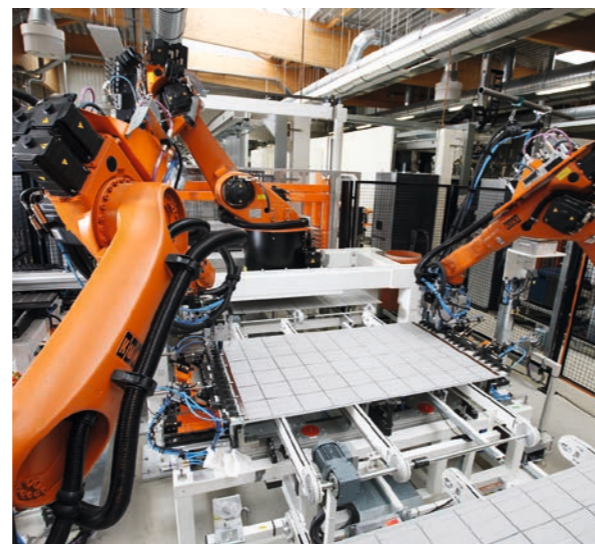
MADE IN GERMANY. OUT OF CONVICTION.

SOLARWATT is Made in Germany, in every respect: For more than twenty years now, all SOLARWATT components have been manufactured in Germany. Development takes place here as well. With two locations in Germany and subsidiaries in France and the Netherlands, the SOLARWATT group employs more than 250 people.

And what do you get out of it? Cutting-edge technology of tomorrow.

You can count on SOLARWATT to provide the very best technology. With the foundation of our SOLARWATT INNOVATION technology center we can even offer you powerful FORMULA 1 expertise. All SOLARWATT components are manufactured in series production according to automotive industry standards.

Choosing SOLARWATT products means staying on the safe side. Especially when it comes to your energy future.



THE SHOWDOWN. COST EFFICIENCY – GLASS-GLASS VS. GLASS-FOIL.

When comparing cost efficiency in glass-glass vs. glass-foil modules, many consumers continue to focus only on the ratio of investment costs to annual yields (€/kWp).

Far more important, however, is the ratio of investment costs to total yields (€/kWh lifetime performance).

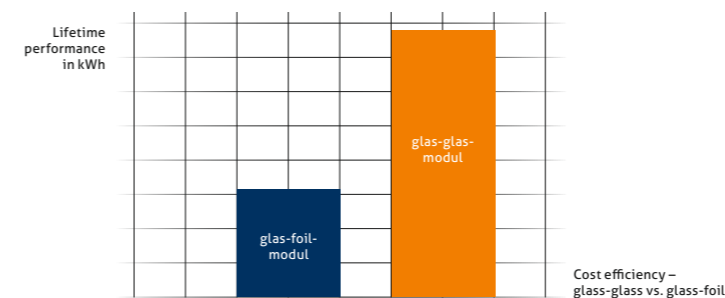
Although glass-glass-modules are about 20% more expensive than conventional glass-foil modules, they last twice as long and are considerably more powerful. So glass-glass-modules allow you to produce twice as much solar energy as glass-foil modules over the entire life of the system, for about the same price.

In addition, glass-foil modules need to be replaced after 25 years – a new investment in modules and installation would be required. Thus, the slightly higher investment in glass-glass-modules over the lifetime pays significantly. With Glass-glass-modules you get more than twice as much life power in kWh compared to glass-foil modules.

You know what they say: Buy cheap, buy twice.



KWH LIFETIME PERFORMANCE PER EURO INVESTED



**HIGHEST STABILITY.
LONGEST LIFE.
BEST YIELDS.**

www.solarwatt.net